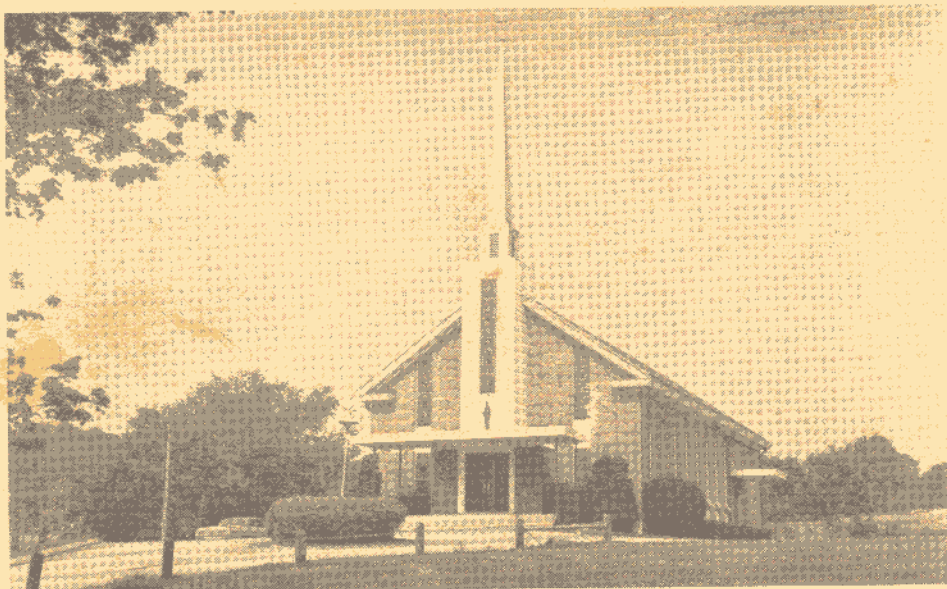


*Saint Catherine of Siena
Parish*

PRESTON, CONNECTICUT



DEVELOPMENT PROGRAM

September

1976

Saint Catherine of Siena

Catherine Benincasa was born in Siena, Tuscany, in 1347. Favored from childhood with supernatural graces she joined the Third Order of St. Dominic at eighteen and lived a life of prayer and penance that was an inspiration to those who knew her or came to know her through her "Dialogue" and other mystic writings.

Like St. Francis of Assisi, Catherine was crowned by God with the gift of the Stigmata.

Indefatigable in her service to the poor, Catherine's zeal, however, was primarily directed to the conversion of sinners and to securing peace for the Church in her fatherland. She was instrumental in bringing about the return of the Popes to Rome, and later she labored — though in vain — to avert the great schism dividing the faithful and the adherents of the rival Pope of Avignon.

Catherine died in Rome, April 30, 1380, and was canonized in 1461. Her remains are in the Minerva Church in Rome where she is held to be one of the city's patron saints.

A BRIEF STATEMENT OF THE PROBLEM

On November 1, 1975, St. Catherine of Siena mission was raised to the canonical status of parish with Rev. Joseph G. Finnerty assigned to it as its first pastor. The purpose was to ensure that the Catholic families of Preston — numbering more than four hundred by the most recent count — would receive the undivided and regular attention of a resident priest rather than continue to share the services provided by the mother parish, St. Mary, in Jewett City.

When Father Finnerty arrived the only parish facility available was the existing church. Nothing else — except part of the debt incurred in its construction, now \$47,500, which is owed to the Hartford National Bank. Consequently, among the many challenges facing him two appeared to be vastly important:

1. **Reducing the debt to manageable proportions;**
2. **Constructing a modest, economical, and functional rectory on parish property adjoining the church.**

But first the parish had to be organized and set in motion as a separate unit. So the first year was spent initiating the many services and programs needed for the spiritual, educational and social well-being of a dynamic young parish. Foremost among these was religious education for which the services of a Sister — full-time pastoral assistant — were obtained. At the same time parishioners were asked to look upon the Offertory as the financial backbone of the parish, and to support it generously so that it would cover day-to-day operating expenses and maintenance. While directing and implementing both activities Father resided in a rented home, the Gallup House, his present abode on Route 164.

Then, attention was given to the matter of reducing the debt and constructing a suitable rectory.

After long deliberation and lengthy consultation with the Bishop and with other priests of the diocese, with parishioners of diverse expertise and experience in business and construction matters, the decision was made to present the problem to the parish, to ask parishioners to contribute commensurate with their giving ability and loyalty to the fledgling parish.

Sunday, September 19, is the day our appeal will be launched.

THE SOLUTION TO THE PROBLEM

The solution is comparatively simple. Everyone must do his share. And with God's help we are confident that everyone will try.

The method is this: we must conduct a successful finance program that will provide funds amounting to at least \$90,000 over a period of thirty months, over and above Offertory income. That is to say, we must achieve our goal without experiencing the slightest reduction in other revenue, or there is no victory.

Clearly, \$90,000 will NOT pay off a \$47,500 debt and ALSO finance construction of a rectory, But it should enable us to reduce the debt to the point where it does not drain such a huge percentage of our revenue (for debt financing). And having our own rectory will free us from the expense of renting and maintaining the home which presently serves in its stead. The savings resulting from both (perhaps as much as \$5,000 or more annually) will then be available for application to our⁽¹⁾ needs.

Our appeal will be addressed to all our parishioners and friends. Each one will be visited and invited to subscribe an amount that will be payable in monthly installments over a period of thirty months.

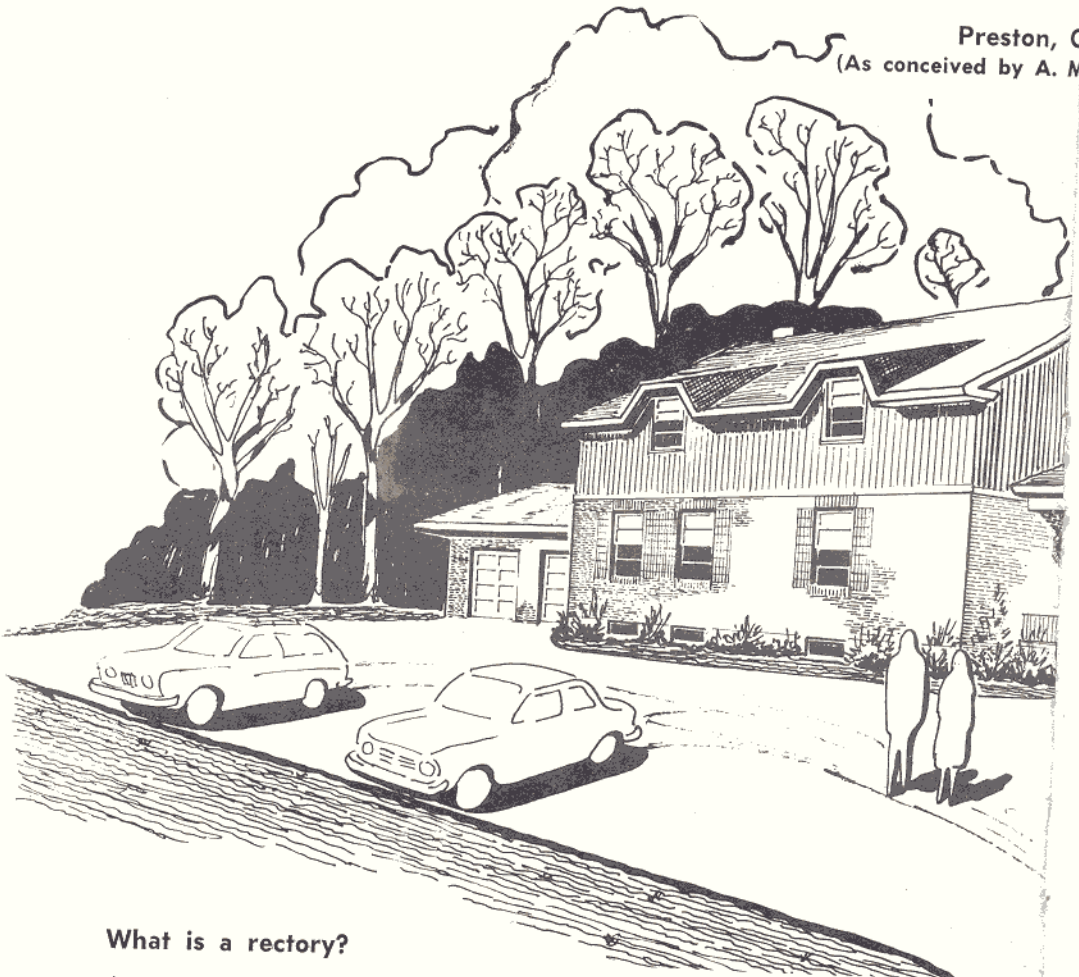
Monthly payment reminders will be sent to all subscribers, and payments will be made to the rectory so as to ensure that there will be no confusion or conflict with the vastly important Offertory program.

Subscriptions are not legally binding, that is to say, they are not legal contracts. Therefore, everyone can participate without fear of legal involvement!

(1) We cannot be more specific because no one can accurately foretell what construction costs will be at some undetermined future date.

THE PROPOSED RECTORY FOR S

Preston, C
(As conceived by A. M



What is a rectory?

A home for a resident priest — and then some. It is also living accommodations for other priests whether assigned to the parish or visitors conducting special spiritual exercises.

It is also home to a housekeeper, an office for the administration of a dynamic and complex “business”, a refuge for private consultation, a meeting place for committees (which will save the cost of illuminating and heating the church hall), a stand-by emergency center.

A rectory is a house, home, office, meeting place, refuge, confessional. It is the focal point of spiritual, social, and educational activities for the entire community.

MODEST

ECONO

T. CATHERINE OF SIENA PARISH

onnecticut
astronunzio, Architect)



MICAL

FUNCTIONAL

THE MEMORIAL PRIVILEGE

Although we are rarely afforded the privilege and opportunity of creating a Memorial in honor or in memory of a loved one, we share that privilege today. Items in the new rectory — part of the essential fabric, furnishings and fixtures of the proposed unit — may be selected and set aside for Memorial purposes.

The price asked for the privilege of creating a Memorial does NOT represent the expected cost. In some cases we shall have to pay more, in many cases much less than cost.

Why are subscription prices not related to cost? Because some items would cost so much that parishioners might not be able to make a selection. Because others, for example, walls, ceilings, floors, etc., simply do not represent desirable Memorials, yet they must be paid for.

Instead of cost, subscriptions are explainable in terms of our need to raise at least \$90,000, the comparative desirability and availability (the quantity) of the various items, and our judgment with respect to what our people might be able to contribute over a period of thirty months.

With this in mind, subscription prices range from a low of \$600 — amounting to about \$4.62 a week — to as high as one is able and willing to reach.

A plaque inscribed with the names of Memorial donors and of persons being honored or commemorated will be centrally located in the vestibule of the rectory.

The names of Benefactors, Patrons, and Sponsors will also be inscribed on a plaque which will be prominently displayed in the rectory.

MEMORIAL OPPORTUNITIES

Item	Subscription
CONFERENCE ROOM	\$10,000 ✓
Crucifix	2,000 ✓
Furnishings (20 shares, each)	800
DINING ROOM	7,500
Crucifix	900 ✓
Furnishings (20 shares, each)	800
LIVING ROOM	7,500
Crucifix	900 ✓
Furnishings (20 shares, each)	800
PASTOR'S LIVING QUARTERS	5,000
Crucifix	900
Furnishings (10 shares, each)	800
GUEST PRIEST ROOM	2,500
Crucifix	900
Furnishings (10 shares, each)	800
GUEST PRIEST ROOM	\$2,500
Crucifix	900
Furnishings (10 shares, each)	800
MEETING ROOM	2,500 ✓
Crucifix	900
Furnishings (10 shares, each)	700
HOUSEKEEPER LIVING QUARTERS	2,500
Crucifix	900
Furnishings (20 shares, each)	700
OFFICE	2,000 ✓
Crucifix	900 ✓
Furnishings (10 shares, each)	600
KITCHEN	1,500
Furnishings (20 shares, each)	700
Appliances (20 shares, each)	600
VESTIBULE	1,000 ✓
Furnishings (5 shares, each)	700
SUPPLY ROOM	1,000
LANDSCAPING (100 shares, each)	600 2

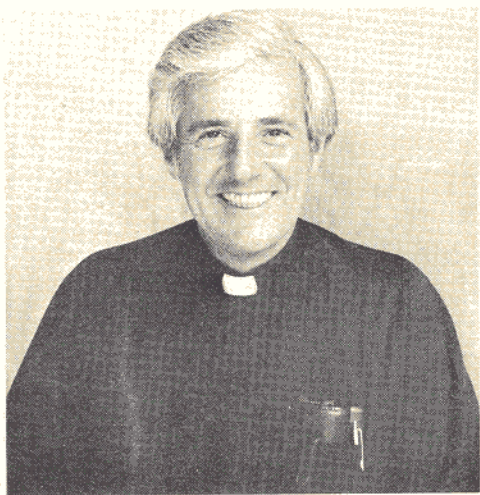
BENEFACTOR \$500

PATRON \$400

SPONSOR \$300

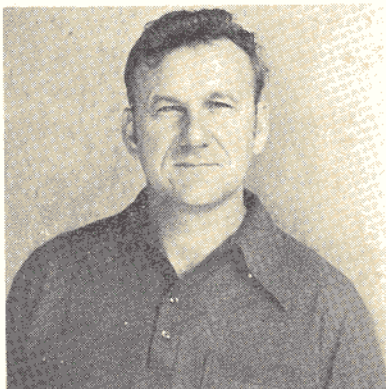
PARISH

DEVELOPMENT



REV. JOSEPH G. FINNERTY, Pastor

Executive General Chairmen



RAYMOND DEPTULSKI



WILLIAM RAY LORD

PROGRAM

ORGANIZATION

DIVISION CHAIRMEN



LEON DuPONT



RAYMOND DWYER



RICHARD DYER



RONALD HADDAD



DANIEL MATSON



WILLIAM NASH



ROBERT O'NEIL



JOSEPH PERRONE



LEONARD RUTA



MICHAEL TONER



JOSEPH URBAN

QUESTION BOX

* **Is a subscription a legal contract?**

Absolutely not. It is a voluntary agreement; nothing more. There should be no hesitation in signing the subscription card because of fear of legal pressure to make good.

* **How long does one have to make payments?**

Although cash is important we realize that most parishioners will not be able to pay for the Memorial of their choice in cash. For this express purpose — to enable EVERY parishioner to make a Memorial selection — anyone may make payments over a long period of months, as many as thirty. Indeed every contributor, including Benefactors, Patrons and Sponsors, may use the thirty month payment period, if they desire.

* **Can families join in the selection of a Memorial?**

Frequently this is done — to honor or commemorate one name or person. However, and this is vastly important, where families get together to select one Memorial; the latter should be among the higher price Memorials — in keeping with their greater giving ability. THIS ALSO APPLIES TO FAMILIES WITH SEVERAL WAGE-EARNERS.

* **Will we be asked to make a second gift during the program?**

Each wage-earner will be visited and asked to make one gift. If he and his family make a Memorial selection he will not be asked to make a second gift during the Program.

* **Are there tax advantages?**

Yes. Space does not permit spelling them out in detail. But it can be safely said that liberal provisions in our Internal Revenue Laws take much of the sting out of giving. Gifts seldom cost as much as they seem. Stocks and bonds are also acceptable and can provide extraordinary tax credits to the donor.

* **How will this affect, say, the Offertory?**

If anything, it should increase the Offertory. We cannot permit the Offertory — the financial backbone of the parish — and other normal income sources to be adversely affected by our program. One should plan to give as much, if not more, to these important collections, or there will be no Victory!